

Befriend a Tree

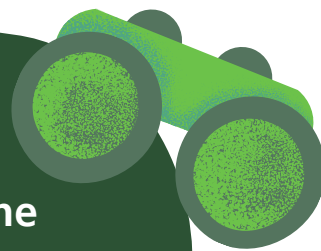
The Parks Trust
MILTON KEYNES

Did you know that there are over 22 million trees in Milton Keynes?! To celebrate the diverse woodlands that can be found in our city, why not head outside and get to know the trees in your local green spaces better? Become friends with a tree and try out these activities!

Use the fallen leaves to make leaf print art



Spot the wildlife that uses your tree



Measure your tree's height and width



Take a photo of your tree every time you visit it



Use crayons and paper to create a bark rubbing



Identify your tree and learn all about its life cycle

